



TWO-WHEEL TRACTORS AND ATTACHMENTS



Cutting-edge design at the hands of the customer.



PERFORMANCE. DURABILITY. VERSATILITY.

More than 1.5 million people in 50 countries have discovered the advantages of owning Europe's most popular two-wheel tractor with attachments.

Built with the same quality design, construction, and material as the four-wheel tractors that BCS manufactures for agriculture and industry, BCS two-wheel tractors tackle all the jobs for which larger tractors are unsuited – mowing slopes, maneuvering in small areas, practicing intensive cultivation, sweeping walkways, and much more.

Featuring all-gear drive and an automotive-style clutch, BCS outperforms and outlasts all the brands of walk-behind equipment that utilize belts and chains. BCS equipment is built for decades of dependable service and is backed by the best warranty in the industry.

Because the BCS tractor features a power take-off shaft and rotating handlebars, the same all-gear driven tractor can power a full range of attachments that will till your garden, blow snow, chip limbs, mow high weeds, sweep your driveway, split firewood, and more to encompass four seasons of versatility. And, with its instantly adjustable handlebars (up, down, and sideways), BCS is user-friendly and fun to use!

So, why have a separate engine and power unit for every piece of seasonal outdoor power equipment? With a customized "outfit" of BCS tractor and attachments, you can enjoy superior performance while saving money, reducing maintenance chores, and minimizing storage space!

FEATURES

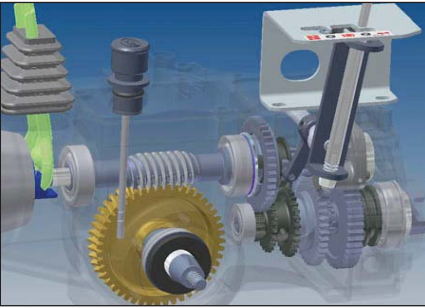
ALL GEAR DRIVE: Featuring heat-treated steel gears and shafts, the all-gear drive transmission on a BCS tractor provides extra durability, unmatched power, and a lower center of gravity for enhanced stability, especially in stony conditions.

AUTOMOTIVE STYLE CLUTCH: With no chains to break or belts to slip, the BCS clutch is mechanically efficient, trouble-free, and user-friendly.

PRECISE BALANCE: The tractor weight is centered over the tines for consistent, uniform pressure. No need to press down on the handles - the machine does all the work!

NO-TIME-LIMIT WARRANTY: Covers BCS tractor transmission parts – including shafts, gears, case, bearings, and even seals. Other components and attachments have a three-year warranty for non-commercial use. Ask your dealer for details.

See the BCS in action with a **FREE DVD!**
Log on to www.bcsamerica.com or call 800-543-1040.



All Gear Drive: Heat-treated steel gears and shafts within each tractor transmission enhance performance.



Quick Reverser: Shuttle-type reverse makes backing up safe and easy on most models.



Differential with lock: Combining maneuverability and positive traction means less work for the operator. Models 732 and up.



Adjustable handlebars: Instant adjustments and anti-vibe mounting provide comfort for all applications.



Power take off: Increased performance with no belts or chains.



Easy attachments: Easy-to-use Quick Hitch is convenient and saves time.

DESIGNED FOR VERSATILITY

Reversible handlebars easily swing 180 degrees to accommodate both front and rear-mount attachments. In less than five minutes you can change from a front-mount mower to a rear-tine tiller. Just as a farmer uses one four-wheel tractor to power his plow, harrow, and seeder, you can use your two-wheel tractor to power all these attachments, plus many more. Compare the cost of single purpose machines to the cost of just one BCS tractor and attachments, and you'll see BCS offers the lowest cost-per-use in the industry!



CHIPPER / SHREDDER



TILLER
WIDTH SIZES RANGE FROM
18" TO 33"



ROTARY PLOW



SICKLE BAR MOWER
WIDTH SIZES RANGE FROM
30" TO 53"



BRUSH MOWER
21", 26" AND 32"



LOG SPLITTER



SWEeper
30" AND 40"



SNOW THROWER
24" AND 28"



PTO SHAFT AND ATTACHMENT
CONNECTION POINT



FLAIL MOWER
24" AND 30"



LAWN MOWER
22" AND 38"



HD COMBO MOWER
30"

A DREAM GARDEN

Let your garden grow with the best walk-behind agricultural equipment available



"THE BEST TILLER ON EARTH"

With a BCS tiller, all-gear drive power and performance mean you don't just dig the dirt, you build your soil. Bust sod, prepare seedbeds, precision cultivate and, when gardening season is over, power compost spent plant material or between-season cover crops directly back into the soil for organically richer soil in the spring.

FEATURES:

- Tines rotate 50% faster than competitive brands at a rate of 20 rotations per wheel revolution. Tine speed can also be adjusted to a 10:1 rotation ratio.
- Planar wedge in center of tiller breaks up center soil, leaving no untilled strip down the middle.
- Tine disconnect with lockout stops tines from spinning during transport or when in reverse for safer operation.
- Adjustable tilling widths: the 26" tiller narrows to 20"; the 30" narrows to 26"; and the 33" narrows to 27".



YOUR GARDEN DESERVES THE BEST

Tillers aren't the only gardening tools BCS offers. All tractors have the unique capability to easily attach other implements for your cultivation needs.

The hiller/furrower creates a furrow and hills plants while you till. It features adjustable wings for variable widths and conveniently fits onto the back of all BCS tillers.

The V-Cultivator provides an alternative method to cultivating, complete with five adjustable spring tines and a transport wheel. Requires a fixed or adjustable tool carrier for mounting.

The root digger is perfect for turning up root vegetables, particularly potatoes. Requires the adjustable tool carrier.

The ridger creates ridges and furrows in previously tilled soil. A straight bar cultivator can be installed to power two ridgers simultaneously. Requires a fixed or adjustable tool carrier.



HILLER/FURROWER



V-CULTIVATOR



ROOT DIGGER



RIDGER



ROTARY PLOW

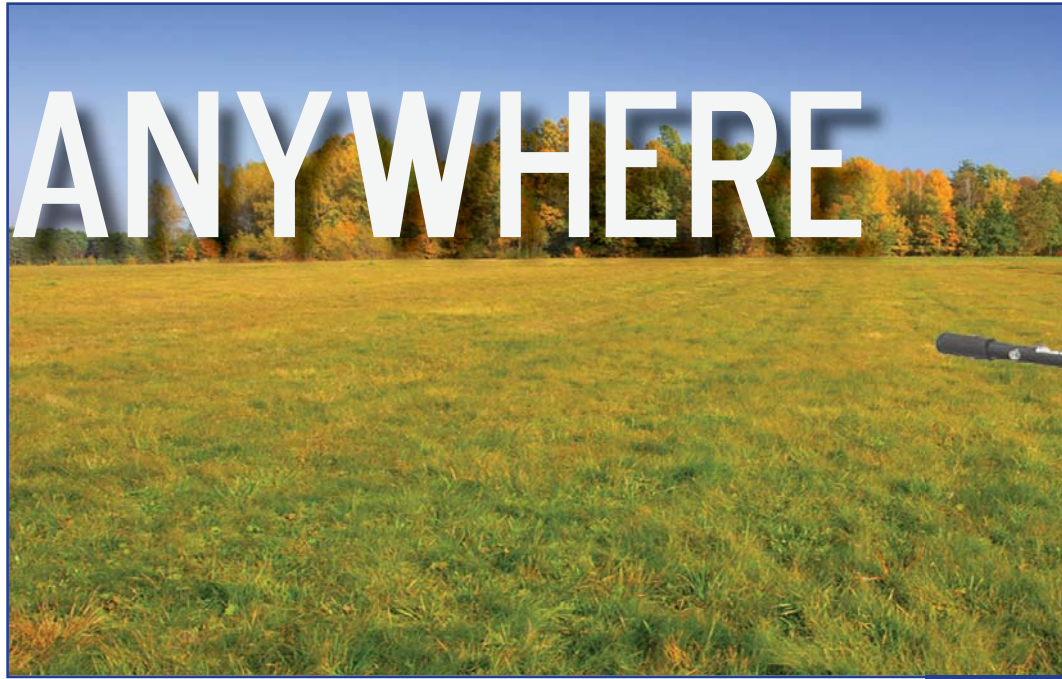
The rotary plow accomplishes a multitude of tasks efficiently and effectively. Used primarily for seedbed preparation, the plow's four spiral blades spin up to 300 times per minute to loosen 10" to 12" of soil in a single pass. Soil is discharged to the right side, enabling the operator to easily build raised planting beds with multiple passes. The rotary plow is particularly effective for breaking new ground and power composting cover crops.

FEATURES:

- Break new ground, power compost cover crops, build raised beds, create drainage ditches, power hill, and more.
- Each pass is 10" wide.
- Creates a bed of loose soil 10" to 12" deep.
- Depth is regulated by an adjustable wheel that also provides for easy transport.
- Swivel rotary plow also available for model 750 only.



MOW ANYWHERE



BCS offers a range of mowers to help you get the job done

SICKLE BAR MOWER

Ideal for mowing tall grass, weeds, woody brush and saplings, the Sickle Bar Mower neatly slices everything off near ground level with no flying debris or thrown stones. Simply walk behind it to create a path through areas you wouldn't dare take a conventional mower. The height-adjustable bar is much wider than the wheelbase, so you can easily trim along ponds, under fences and more, saving you hours of trimming time! Your BCS tractor provides all the maneuverability, plus power reverse, to get you in and out of "impossible" areas with ease.



FEATURES:

- Bar widths range from 30" to 53".
- Optional oil bath transmission for smooth operation and longer life.
- Optional "Duplex" sickle bar also available – a unique and fast sickle bar attachment that mows a 47" or 59" swath using two moving blades, each moving in equal and opposite directions.
- Ideal for commercial operations.





BRUSH MOWER

Mow bravely into thick, tangled brush and turn your overgrown areas into second-tier lawn with the BCS Brush Mower. All gear drive provides the power to cut anything it can bend forward as you maneuver in tight spaces where large tractors could never go. Its design features swinging blades similar to those of large rotary brush mowers for 4-wheel farm tractors. This protects the blades and drive mechanism because the blades fold back when encountering a large rock or other hard surface.

FEATURES:

- Floating deck tilts up to 15 degrees to follow ground contours.
- 1/4" thick blades "give" when hitting a rock.
- 4" cutting height.
 - Gears immersed in oil provide constant lubrication.
 - Available in 21", 26", and 32" widths.



LAWN MOWER

Yes, your BCS tractor will also mow your manicured lawns with professional results! The Professional Series tractor models extend the versatility of your machine with powerful, shaft-driven lawn mowers that will cut even heavy grass with ease. You won't need to buy a new machine to cut your lawn when you own a BCS tractor! Available in 22" or 38" widths.

FEATURES:

- Unique top-mounted lever instantly adjusts the blade(s) for different heights without moving the entire deck.
- Easy front-dumping of top-mounted 4-bushel bag on the 38" model.
- Mowing sulky option lets you ride instead of walk!

FLAIL MOWER

The BCS Flail Mower will make mulch out of the toughest overgrowth. With 42 vertically rotating blades, the flail mower is perfect for cutting down anything it can bend forward. Available in 24" and 30" widths. Fits models 722 and up.

FEATURES:

- Convenient control handle for setting cutting height from 1/2" to 4".
- Automatic opening and closing front deflector.
- Retractable caster wheels.
- Wear-resistant steel side skids.



HD COMBO MOWER

The BCS Heavy-Duty (HD) Combo Mower has multiple applications: a brush cutter capable of reclaiming overgrown areas, as well as a mower for maintaining your lawn.

FEATURES:

- Floating deck follows ground contours.
- 30" blade is 1/4" thick to easily propel through woody brush.
- Caster wheels retract and side skids are used for dense brush.



INTO THE WOODS

CHIPPER / SHREDDER

Turn your BCS tractor into a mulch and compost maker. Efficiently reduce limbs up to three inches thick into attractive wood chips to enhance your landscape plantings while eliminating unwanted weeds. The shredder has 28 reversible flails to shred small limbs, yard debris, etc. into rich compost garden material.



FEATURES:

- Self-propelled tractor wheels easily transport the chipper to your brush piles.
- 37-pound flywheel provides momentum to power the high carbon steel chipper blade through tough limbs.
- Includes 1 3/8" screen and rods-and-rollers for shredding heavy, wet material without clogging.



LOG SPLITTER

Log splitting has never been so easy! Take your self-propelled log splitter anywhere with this highly efficient, commercial quality attachment manufactured for BCS by Wallenstein. Use the splitter horizontally or vertically to fit the situation, and watch huge logs up to 24" long split with 20-ton force.

FEATURES:

- 16 GPM two-stage hydraulic pump with a 4" x 24" cylinder.
- Average stroke time of 7 seconds (14 seconds with return).
- Optional 4-way splitting wedge available.



Don't let it sit -
use your BCS
tractor in the
winter, too



SNOW THROWER

Whether the forecast calls for a dusting of dry powder or deep, wet drifts, you'll be ready to dig out with the BCS Snow Throwing attachment. Your first impression of the BCS snow thrower in action will be that it's misnamed – it should be called a snow cannon!

An incredibly fast auger/impeller speed of 1218 revolutions per minute, in combination with all-gear-drive, means that performance exceeds expectations in both dry and wet snow conditions.

FEATURES:

- Wide, adjustable skids allow for six height settings from 0" for smooth surfaces to 2" for gravel surfaces and uneven walkways.
- Stainless steel discharge chute conducts cold quickly and never rusts.



SNOW BLADE

The BCS Snow Blade removes snow quickly and efficiently. Featuring five different angling positions from the operator's position, this 40" blade fits models 722 and up.

FEATURES:

- Side-to-side blade flotation.
- Replaceable cutting edge.
- Adjustable skids.
- Weight kit for positive surface contact.
- Optional non-metallic cutting edge.



POWER SWEEPER

Now you can walk your way to a fresh-swept look. The BCS Power Sweeper will cover your entire property in no time, and it's so easy to operate, you won't hesitate to use it after each storm. This is a true four season tool. In spring, it's ideal for thoroughly removing damaging road salts left over from winter. During the winter months, it's the best way to remove up to 6" of dry snow from any walkway. You can even use it as a dethatcher on your lawn to give your grass a fresh, healthy look!

FEATURES:

- Change angles effortlessly from operator's position.
- Adjustable gauge wheels allow for wide range of applications.
- Heavy-duty nylon bristles provide long life.





HARVESTER SERIES

BCS's most popular series, Harvester models are designed for customers with a limited number of attachments for which they intend to use a BCS tractor.



HARVESTER 710

MODEL 710

- Engine:** Subaru SP170
- Transmission:** Double cone clutch, all gear drive with straight axle
- Wheel Speeds:** 2 forward, 2 reverse
0.6 and 1.4 mph
6.8 mph transport speed



HARVESTER 722

MODEL 718

- Engine:** Honda GX200
- Transmission:** Double cone clutch, all gear drive with straight axle
- Wheel Speeds:** 2 forward, 2 reverse
0.6 and 1.4 mph
6.8 mph transport speed

MODEL 722 *

- Engine:** Honda GX240
- Transmission:** Double cone clutch, all gear drive with straight axle
- Wheel Speeds:** 2 forward, 2 reverse
0.6 and 1.4 mph
6.8 mph transport speed

* Electric start available



PROFESSIONAL SERIES

The BCS Professional Series can power virtually all attachments, giving you maximum versatility and value. Differential Drive provides exceptional maneuverability for ease of use and increased productivity.



PROFESSIONAL 732

POWERED by HONDA™



PROFESSIONAL 853

MODEL 732 *

- Engine:** Honda GX340
- Transmission:** Double cone clutch, all gear drive with differential lock
- Wheel Speeds:** 2 forward, 2 reverse
0.7 and 1.7 mph
8.3 mph transport speed

MODEL 852 *

- Engine:** Honda GX390
- Transmission:** Double cone clutch, all gear drive with differential lock.
- Wheel Speeds:** 3 forward, 3 reverse
0.7, 1.7, and 2.7 mph
8.3 mph transport speed in front-mount position only.

MODEL 853 *

- Engine:** Honda GX390
- Transmission:** Double cone clutch, all gear drive with differential lock.
- Wheel Speeds:** 3 forward, 3 reverse
0.7, 1.7, and 2.7 mph
8.3 mph transport speed in rear-mount position only.

* Electric start available

Tractor Models



PowerSafe® SERIES

The PowerSafe (PS) version of the Professional Series puts a premium on safety with the latest from BCS technology. Its hydro-mechanical clutch is longer-lasting and immediately stops power to the implement when the safety lever is released without shutting down the engine.

MODEL 739*

- Engine:** Honda GX340
- Transmission:** Hydraulic clutch, all gear drive with differential lock
- Wheel Speeds:** 3 forward, 3 reverse
0.8, 1.8 and 2.7 mph



POWERSAFE 739

POWERED by
HONDA™



POWERSAFE 750

MODEL 749*

- Engine:** Honda GX390
- Transmission:** Hydraulic clutch, all gear drive with differential lock
- Wheel Speeds:** 3 forward, 3 reverse
0.8, 1.8 and 2.7 mph

MODEL 750

- Engine:** Honda GX390
- Transmission:** Hydraulic clutch, all gear drive with differential lock
- Wheel Speeds:** 3 forward, 3 reverse
0.6, 1.4 and 2.1 mph

* Electric start available



RENTAL/SPECIALTY SERIES

Rental models 712 GX5 and 712 GX8 bring BCS durability and versatility to the rental market, with single forward and reverse speeds for even easier use. Model 620 is unique to the BCS fleet and is designed for front-mount attachments only.

MODEL 712 GX5 / 712 GX8

Engine: Honda GX160 / GX240

Transmission: Double cone clutch, all gear drive with straight axle

Wheel Speeds: 1 forward, 1 reverse
0.6 mph forward
1.4 mph reverse



RENTAL 712 GX8

POWERED by
HONDA™



MODEL 620

MODEL 620

Engine: Honda GX240

Transmission: Double cone clutch, all gear drive with straight axle

Wheel Speeds: 3 forward, 3 reverse
0.7, 1.5, and 2.3 mph
6.8 mph transport speed

FINDING THE RIGHT FIT

The BCS tractor line-up ranges from economical (Harvester 710) to extraordinary (Professional 853), and everything in between. **Choosing the model that's right for you depends on your needs now AND in the future.** The chart below indicates the recommended attachments for each tractor model.

Tractor Model	Rear Tine Tillers					Rotary Plow	Sickle Bar Mowers				Brush Mowers		Snow Throwers		Log Splitter	Sweepers		Lawn Mowers		Flail Mowers		Chipper/ Shredder
	18"	20"	26"	30"	33"		30"	40"	45"	53"	26"	32"	24"	28"		30"	40"	22"	38"	24"	30"	
710	X						X	X								X						
712 GX5	X						X	X								X						
712 GX8		X	X				X	X	X						X							X
718	X						X	X				X				X		X				
722		X	X				X	X	X			X	X	X	X	X	X	X				X
732 / 739			X	X		X	X	X	X	X		X	X	X	X	X	X	X	X	X	X	X
749			X	X		X	X	X	X	X	X	X	X	X	X	X	X		X	X	X	X
750					X	X	X	X	X	X		X		X	X	X	X		X		X	X
852 / 853			X	X		X	X	X	X	X	X	X	X	X	X	X	X		X	X	X	X
620							X	X	X			X	X	X	X	X	X		X			X

15-DAY HOME TRIAL GUARANTEE

BCS wants you to buy with confidence. Purchase your two-wheel tractor and attachments, and try them at home for up to 15 days. If you're not completely satisfied, you can exchange them or receive a complete refund – guaranteed! **With BCS, the confidence is built right in.**

BCS AMERICA IS ONLINE !

Log on to www.bcsamerica.com for detailed information on matching BCS tractors and attachments. You'll also find a complete list of attachments and accessories, pricing, manuals, videos of BCS in action, and more.

We're also on Facebook! www.facebook.com/BCSAmericaLLC

ACCESSORIES

Different situations present different needs, which is why BCS offers several accessories to enhance performance, efficiency and versatility. Here is a sample of BCS's most popular items:



QUICK HITCH

Easily attach and remove BCS attachments with the flip of a lever! The quick hitch eliminates using tools to change implements and is widely considered to be the most useful BCS accessory.



PTO EXTENSION

Use one or more 3" PTO extensions to increase the weight of the attachment, if needed for enhanced operation. Some Sickle Bar and Snow Thrower attachments may require this extension, especially on slopes.



FIXED WHEEL EXTENSIONS

Improve stability on hillsides or rough terrain by extending the wheels 5" outward. It also can be used to bolt dual wheels together for increased traction on the ground. Fits all BCS models.



WHEEL WEIGHTS

Adding weight to tractor wheels is often important, particularly when operating non-PTO attachments. Better traction improves performance and safety.



MOWING SULKY

Convert a walk-behind BCS tractor into a rider. For use with sickle bar, rotary lawn mower or sweeper attachments. Fits models 718 and up.



UTILITY TRAILER

Use a BCS tractor to create a motorized dump cart capable of hauling the operator and loads up to 875 pounds. Trailer includes a safety brake. Fits models 722 and up.



DOZER BLADE

Move and level loose gravel and soil with the BCS Dozer Blade. It can be used in a push or pull position. Fits models 722 and up.

Your local authorized servicing dealer is:



BCS Customer Service:
A Toll-Free Call Away!

800-543-1040

BCS ... At Your Fingertips!

Now with more than 600 servicing dealers throughout the United States, Canada, and the Caribbean, it's easier than ever to find BCS equipment.

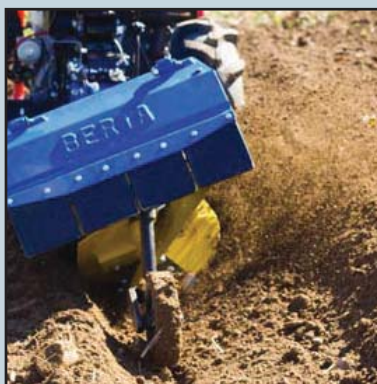
To locate your nearest dealer, log on to www.bcsamerica.com or call toll-free: **800-543-1040**.



© 2013 BCS America, LLC

Always wear safety gear appropriate for the equipment you are using: gloves, eye and ear protection, and protective clothing.

Specifications are subject to change without notice or obligation. Other engine options may be available. Warranty and return policies vary for commercial/rental customers.



VICTOR

300 - 400

AR



BCS

VICTOR 300 - 400 AR

The **VICTOR 300 and 400 AR** tractors are a new concept in agricultural machinery. Dynamic and rational, they are designed to meet the diverse needs of both the professional and the "part-time" farmer. The compact dimensions and reduced steering radius allow these tractors to move easily through all crop rows. Powerful engines with low emission levels and fuel consumption make the **VICTOR** ideally suited to a wide range of applications. Permanent 4-wheel drive and excellent stability enable these tractors to work on any type of terrain and in all weather conditions. The ergonomic design of the tractors simplifies the task of the operator, significantly reducing fatigue and stress.



INNOVATIVE DESIGN

The **VICTOR 300 and 400** are medium power articulated tractors with centre pivot and equal-size front and rear wheels. These two new tractors with their outstanding innovative features have been specifically designed for use in vineyards, orchards or greenhouses and to meet the needs of the part-time farmer.

RELIABILITY

The outstanding reliability of the **VICTOR** tractors is the result of the rigorous design process applied to each individual component, carefully selected materials and an advanced production system that is planned entirely within the **BCS** factories. All this guarantees the **VICTOR** a level of performance at the top of its class, with high productivity and low operating costs.

PERSONAL SAFETY AND ENVIRONMENTAL PROTECTION

The **BCS** engineers who designed the **VICTOR** have given top priority to safety and respect for the environment. The tractors incorporate a range of features designed to promote not just the safety of the operator, but anyone within the tractor operating area. **BCS** tractors are



destined for customers who work in close contact with nature, and it therefore follows that environmental protection is always among our chief concerns when we design our products.

Extensive use is made of recyclable materials. For our painting processes, we only use products with low environmental impact. Emission and noise levels comply fully with current standards.

ALWAYS BY YOUR SIDE

No manufacturer is yet able to make a 'perfect' product, although the high build quality of our tractors is certainly one of their outstanding characteristics. Few makers, however, provide an after-sales service equal to that of **BCS**. Our widespread network of dealers and parts distributors is constantly at the service of our most valuable asset-our customers.

Our qualified technicians are always on hand to carry out servicing and repairs quickly and competently. Our replacement parts service is simple, swift and efficient. All **BCS** original replacement parts, like our tractors, come with a full warranty. When you have chosen your **BCS** tractor, remember to read the use and maintenance handbook before use, as this will help you to get know your machine better and save you any unnecessary problems.

ENGINES

The indirect injection diesel engines installed as standard on the **VICTOR** tractors incorporate the very latest combustion and injection systems. The low-turbulence prechamber, overhead camshaft and belt-driven timing, all add up to an engine with optimum combustion efficiency and low mechanical noise.

The masses of the moving parts have been reduced to a minimum and optimised crankshaft balancing ensures that vibration levels are around the lowest detectable values. The injection system design, based around a patented pump-injector unit, and the optimisation of those components having a direct bearing on the combustion process has reduced emissions to below the limits





stipulated by even the most stringent standards (CARB, CE and EPA). By positioning all the main functions in the cylinder heads, we have managed to keep the overall dimensions of the engine block to a minimum. The **VICTOR 300** is equipped with a 1028 cc 3-cylinder engine that produces 19kW/26HP at 3400 rpm.

The **VICTOR 400** comes with a 1372 cc 4-cylinder engine that delivers 25.5kW/35HP at 3400 rpm.

Both engines are water-cooled and deliver high power with very high driving torque at low engine speeds. Sturdy and reliable with low fuel consumption, they also benefit from low running costs and readily available replacement parts.

TRANSMISSION

The large-diameter clutch fitted to the **VICTOR** offers smooth, progressive engagement and an unlimited service life.

The gearbox, with spur gearing specially designed to reduce noise levels, offers 12 speeds-8 FWD and 4 REV. The gear ratios are rationally distributed to cover a wide range of applications, allowing full use of the power delivered by the engine for maximum productivity in all working conditions.

The front and rear differential locks are mechanically controlled. Drive is permanently transmitted to all 4 wheels.

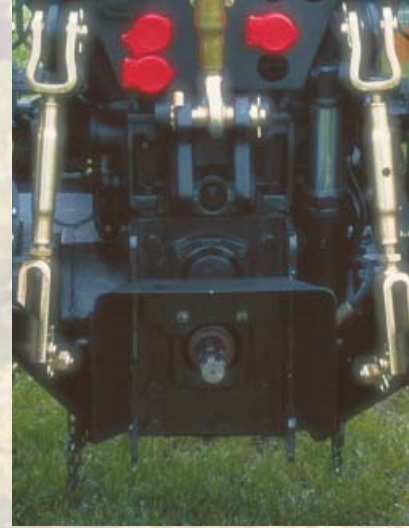
FRAME

The structural characteristics of the **VICTOR** are those of a typical articulated tractor with central articulation. The short wheelbase and reduced turning radius allow maximum manoeuvrability on all types of terrain. The weight distribution, designed to be equalised over all four wheels when the tractor is in operating condition with a rear-mounted implement, ensures maximum grip and traction. The operator station is positioned centrally and low down to offer greater operator protection. The **VICTOR** chassis is constructed from two frames that can move relative to each other when travelling over uneven ground, thereby maintaining stability and grip at all times.



STEERING

The short wheelbase and central articulation gives the **VICTOR** a much reduced turning circle that allows rapid, precision manoeuvring between even the narrowest crop rows. The servo-assisted hydrostatic steering is smooth and precise, with a minimum turning radius of just 2200 mm.



HYDRAULIC REAR LIFT

The **VICTOR** is equipped with a monobloc hydraulic rear lift with a vertical ram cylinder and 3-point hitch Category I. The lifting capacity at the link ends is 700 kg.

TYRES

Tyres are a critical factor when it comes to obtaining the best results in all ground conditions. **BCS** offers a wide choice of tyres with different characteristics and tread patterns to ensure perfect grip on any surface.

HOW TO CHOOSE THE RIGHT TRACTOR

Choosing the right tractor for your needs is no easy task. Characteristics, dimensions and optional equipment vary widely between models and manufacturers. A few tips might help you make the best investment.

Firstly, you can rely on the experience of your **BCS** dealer, who will be able to offer expert advice to help you choose the right tractor for your particular needs.

Secondly, you can count on a manufacturer with over 50 years experience in the agricultural machinery sector. Quality has always been the cornerstone of **BCS** production, and is one of the distinguishing characteristics of all our tractors.

Another good reason for choosing a **BCS** tractor is our excellent after-sales service. Our network of dealers and parts distributors is supported by highly-qualified technicians who are always on hand to provide rapid and efficient service to ensure that your tractor is always in optimum condition when you need it.

If you are fortunate enough to purchase a **BCS** tractor, you'll benefit from reliability that is second to none, but should any problems arise, you can rest assured that your **BCS** dealer will be able to solve them rapidly.



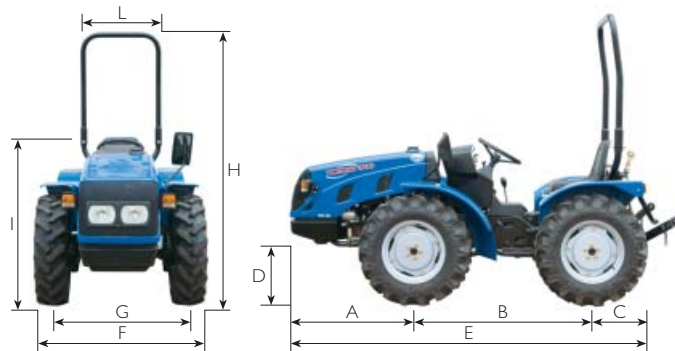


Ground speeds in Km/h at 3400 rpm with 7.5L-15 tyres



Tyre type and rim

	A Tyre width mm.	B Track width mm.	C min/max width mm.
6.50-16 with adjustable rim	183	804 - 1180	987 - 1363
7.50-16 with adjustable rim	208	804 - 1180	1012 - 1388
7.5L-15 with adjustable rim	209	878 - 1106	1087 - 1315
260/70-16 with adjustable rim	260	882 - 1102	1142 - 1362



VICTOR 300AR

	A	B	C	D min max	E	F min max	G min max	H min max	I min max	L
mm	892	1156	705	237 258	2753	987 1388	804 1180	1948 1969	1086 1107	675

VICTOR 400AR

	A	B	C	D min max	E	F min max	G min max	H min max	I min max	L
mm	975	1156	705	237 258	2890	987 1388	804 1180	1948 1969	1086 1107	675

Specifications	VICTOR 300AR	VICTOR 400AR
FRAME	Integral frame articulated around centre pivot	
TRACTION	Permanent 4-wheel drive	
ENGINE	Indirect injection diesel	
Engine manufacturer	Lombardini	
Type	LDW 1003 FOCS	LDW 1404 FOCS
N° of cylinders	3	4
Displacement cc	1029	1372
Power kW/CV	19/26	25,5/35
Engine rpm	3400	
Maximum torque (Nm/rpm)	59.0 - 2200	82.5 - 2200
Cooling system	Water	
TRANSMISSION	12-speed gearbox: 8 FWD + 4 REV	
CLUTCH	Dry single-plate	
DIFFERENTIAL LOCK	Front and rear	
POWER TAKE-OFF	Rear; 540 rpm and ground speed	
REAR LIFT	With external ram cylinder; 3-point hitch category I	
Lifting capacity kg	700 at link ends	
SERVICE BRAKES	Drum brakes, with mechanical control	
EMERGENCY BRAKE	Acting mechanically on the service brakes	
STEERING	Hydrostatic steering on articulated joint	
ELECTRIC SYSTEM	12 Volt 45 AH	
SAFETY FRAME	Front foldable	
TYRES	Front and rear: standard 6.50-16. Optional: 7.5L-15, 7.50-16 or 260/70-16	
WEIGHT kg	850	880
OPTIONAL EQUIPMENT	* Bostrom seat* Front tow hook Maximum of 2 auxiliary control valves * Wheels weights	

90100750 - 03/2005 - design by Divigrat

The information and technical specifications given are not binding; the specified models can be changed by the Manufacturer, without prior notice.



Your BCS Partner

BCS S.p.A.

Sede Amministrativa e Stabilimenti:
Viale Mazzini, 161 - 20081 Abbiategrasso (Milano)
Tel. da Italia: 02/94821
Tel. International: INT + 39.02.9482.1
Fax da Italia: 02/9482398
Fax International: INT + 39.02.9482398
www.bcs-ferrari.it
e-mail: export@bcs-ferrari.it

VICTOR
400

AR

BCS